

BAND-OPTIONS INDICATORS

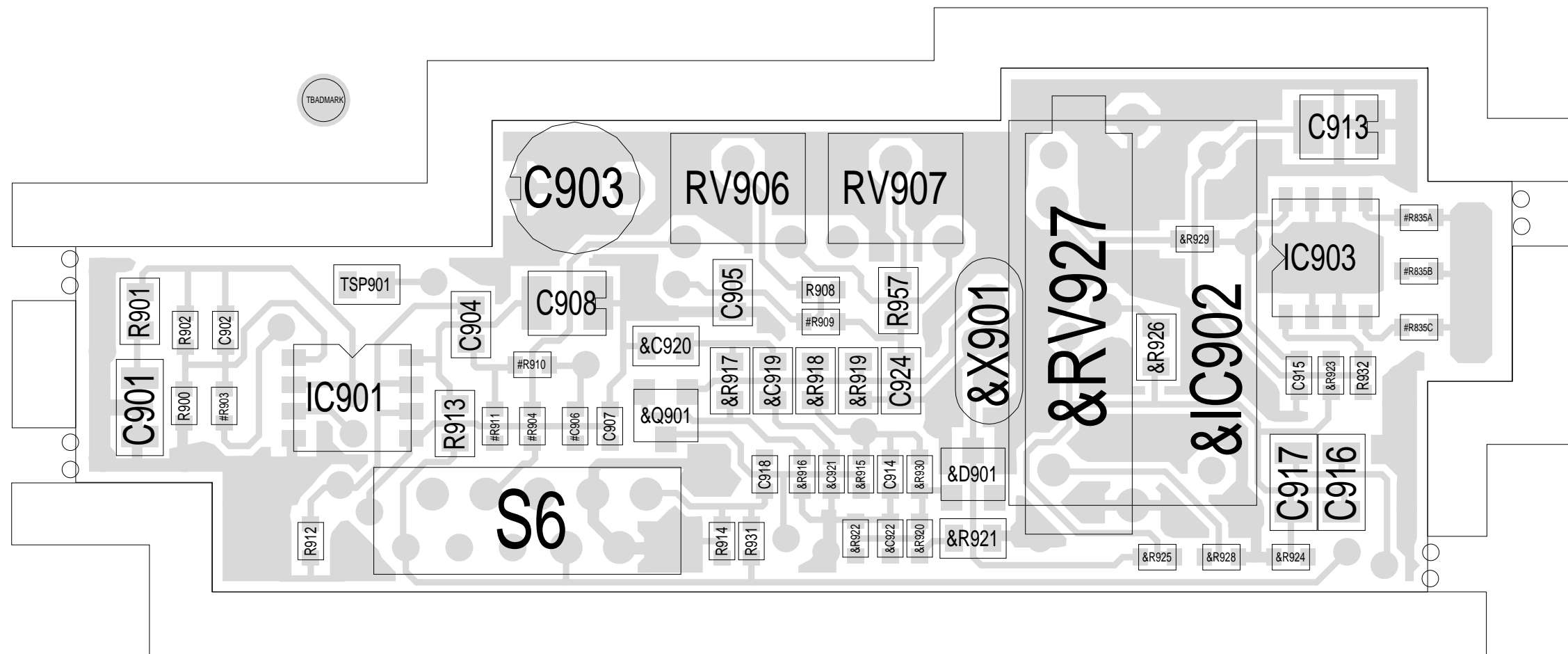
#R835A FITTED FOR W/B } MID & WIDE BAND VARIANTS
 #R835B FITTED FOR M/B } ARE THE SAME.
 #R835C FITTED FOR N/B

OPTIONS FOR THE TCXO TEMP STABILITY

5ppm — XTAL -30 TO +60
 3ppm — MODULE -30 TO +60
 VXO2605A1
 2.5ppm — -30 TO +75C VCTCXO
 VXO2605A-1:1 (T2000-800)

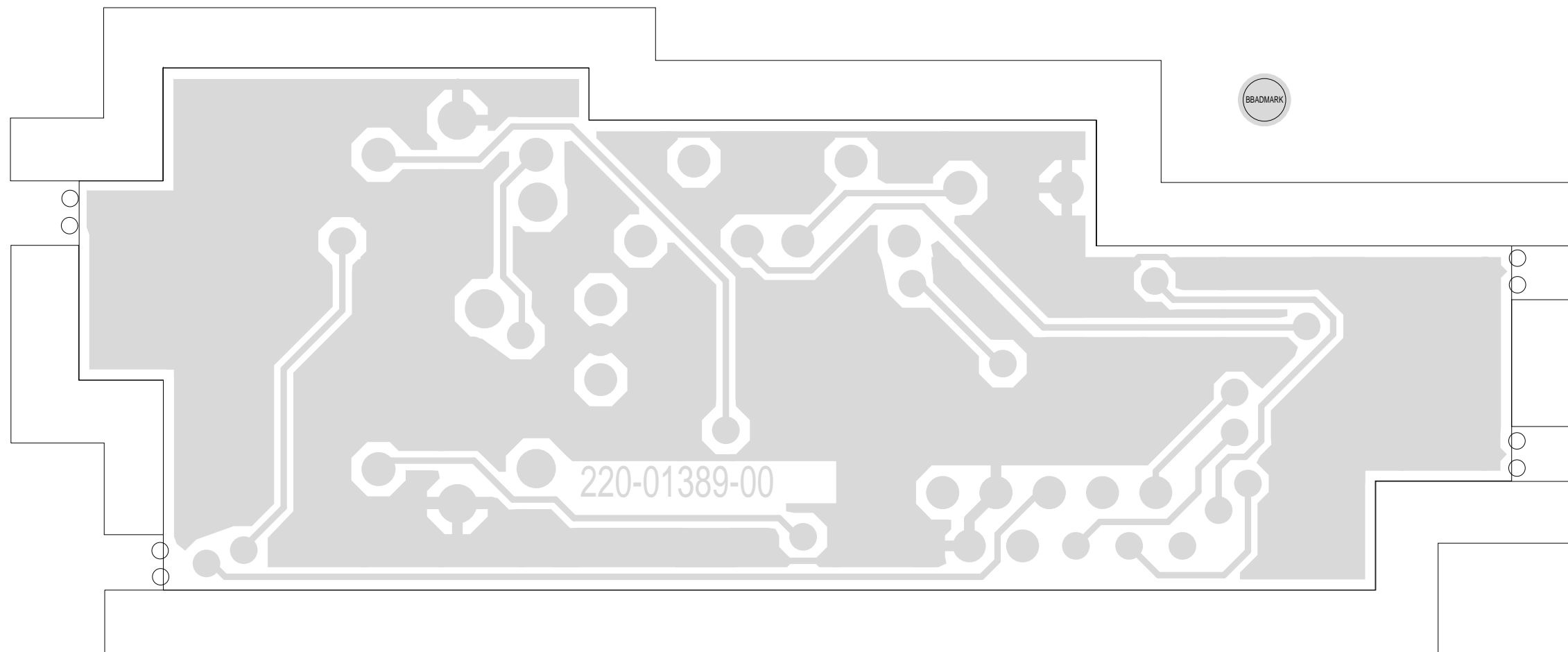
© TAIT ELECTRONICS			
TCXO SERIES 2			
T2000			
IPN:	ISSUE:	FILE NAME:	ID:
220-01389-00	A	138900A	2.SC. 1
PROJECT:	DESIGNER:	FILE DATE:	NO. SHEETS:
SERIES 2	RPS	12/9/96	1

REV/ISS	AMENDMENTS	DRAWN	CHKD	D.O.	APVD	DATE



TAIT ELECTRONICS	IPN:	ISS:	ID:	DATE:
	220-01389-00	1	1.TA	14 Feb 2000
TCXO-SERIES2 PCB LAYOUT - TOP SIDE				

Scale: 4:1 ; Rotation: 0 degrees



TAIT ELECTRONICS	IPN: 220-01389-00	ISS: 1	ID: 2.BA	DATE: 14 Feb 2000
TCXO-SERIES2 PCB LAYOUT - BOTTOM SIDE				

Scale:4:1 ; Rotation: 0 degrees